

Supplement: Presentations for Items 5 and 6

Agenda

Economy and Environment Overview and Scrutiny Panel

**Wednesday, 11 September 2019, 2.00 pm
County Hall, Worcester**

All County Councillors are invited to attend and participate

This document can be provided in alternative formats such as Large Print, an audio recording or Braille; it can also be emailed as a Microsoft Word attachment. Please contact Democratic Services on telephone number 01905 844965 or by emailing democraticservices@worcestershire.gov.uk

DISCLOSING INTERESTS

There are now 2 types of interests:
'Disclosable pecuniary interests' and **'other disclosable interests'**

WHAT IS A 'DISCLOSABLE PECUNIARY INTEREST' (DPI)?

- Any **employment**, office, trade or vocation carried on for profit or gain
- **Sponsorship** by a 3rd party of your member or election expenses
- Any **contract** for goods, services or works between the Council and you, a firm where you are a partner/director, or company in which you hold shares
- Interests in **land** in Worcestershire (including licence to occupy for a month or longer)
- **Shares** etc (with either a total nominal value above £25,000 or 1% of the total issued share capital) in companies with a place of business or land in Worcestershire.

NB Your DPIs include the interests of your spouse/partner as well as you

WHAT MUST I DO WITH A DPI?

- **Register** it within 28 days and
- **Declare** it where you have a DPI in a matter at a particular meeting
 - you must **not participate** and you **must withdraw**.

NB It is a criminal offence to participate in matters in which you have a DPI

WHAT ABOUT 'OTHER DISCLOSABLE INTERESTS'?

- No need to register them but
- You must **declare** them at a particular meeting where:
You/your family/person or body with whom you are associated have
a **pecuniary interest** in or **close connection** with the matter under discussion.

WHAT ABOUT MEMBERSHIP OF ANOTHER AUTHORITY OR PUBLIC BODY?

You will not normally even need to declare this as an interest. The only exception is where the conflict of interest is so significant it is seen as likely to prejudice your judgement of the public interest.

DO I HAVE TO WITHDRAW IF I HAVE A DISCLOSABLE INTEREST WHICH ISN'T A DPI?

Not normally. You must withdraw only if it:

- affects your **pecuniary interests** **OR**
relates to a **planning or regulatory** matter
- **AND** it is seen as likely to **prejudice your judgement** of the public interest.

DON'T FORGET

- If you have a disclosable interest at a meeting you must **disclose both its existence and nature** – 'as noted/recorded' is insufficient
- **Declarations must relate to specific business** on the agenda
 - General scattergun declarations are not needed and achieve little
- Breaches of most of the **DPI provisions** are now **criminal offences** which may be referred to the police which can on conviction by a court lead to fines up to £5,000 and disqualification up to 5 years
- Formal **dispensation** in respect of interests can be sought in appropriate cases.

Economy and Environment Overview and Scrutiny Panel

Wednesday, 11 September 2019, 2.00 pm, County Hall, Worcester

Membership

Councillors:

Mr A A J Adams (Chairman), Mr P Denham (Vice Chairman), Mr G R Brookes, Mr B Clayton, Mr M E Jenkins, Mr A D Kent, Mr J A D O'Donnell, Ms C M Stalker and Mrs R Vale

Agenda

Item No	Subject	Page No
5	Presentation slides - Economic Growth	1 - 24
6	Presentation slides - Infrastructure for Growth	25 - 38

Agenda produced and published by the Head of Legal and Democratic Services, County Hall, Spetchley Road, Worcester WR5 2NP. To obtain further information or hard copies of this agenda, please contact Emma James or Jo Weston 01905 844965, email: scrutiny@worcestershire.gov.uk

All the above reports and supporting information can be accessed via the Council's website [website](http://www.worcestershire.gov.uk/info/20013/councillors_and_committees)http://www.worcestershire.gov.uk/info/20013/councillors_and_committees

Date of Issue: Tuesday, 3 September 2019

This page is intentionally left blank



Open for
Business

Growth and Investment Team:

Page 1





Game Changer Sites

The objectives of the Game Changer Sites are:

- to create a strategically important employment sites,
- to attract commercial occupiers, that will generate new jobs and investment; and
- to contribute to the sustainable development and growth of the Worcestershire economy.
- Prioritising resources/impact



A 72 hectare (178 acre) site set immediately to the east of the M5 motorway at junction 6. With outline planning consent for 1,500,000 sq ft (140,000 sq m) of manufacturing, offices, R & D and logistics buildings, Worcester Six one of the regions flagship developments in Worcestershire. So far 50% of phase one is either let or under construction

Current and future Worcester Six occupiers/investors include:

- Kimal
- Spire Healthcare
- Siemens – Material Solutions Ltd
- Liberty Property Trust
- Kohler Mira
- Cornelius Drinks

Impact so far:

- 700,500sqft now let or under construction
- Circa 250 jobs.
- £71m Private Sector Leverage





The Purpose

- The new development aims to promote and enhance supply chain links and to further develop the skills of the local labour market.
- The development has planning consent for 900,000 sqft of premium employment space and the Gateway development is set to deliver up to 2,500 jobs to the area as well as achieving an increase in economic growth and productivity, through the development of high-quality headquarters-style manufacturing facilities.

Impact

The impact is yet to be realised until the scheme is complete however, the Output and Outcomes are detailed:

Output / outcome	Total forecast
Land serviced (ha) – direct output	25.5
Gross Value Added (£m) – indirect outcome	934.3
Commercial / employment floorspace created (m ²) – indirect outcome	85,642m ²
Jobs created or safeguarded	1,790





- WCC is a majority share holder in MHSP alongside Malvern District Council. The site is the only science park in the county, accommodating over 30 technology-rich companies employing over 400 people
- WCC has an ongoing investment plan for the site with the latest development being funded with Worcestershire LEP- **Phase 5** which is now built providing a further 17,000 sq ft of Technology/R&D space

The next Phase: Malvern Hills Technology Park

Page 5
Recently Worcestershire County Council with Malvern Hills District Council purchased 4.5 ha of non-serviced land adjacent to the MHSP site. It is anticipated that the development will accommodate up to 250,000 sq ft of B1(b) commercial floor space.

- The Strategic Project Board and Joint Infrastructure Board Governance in place and members agreed.
- Specification developed and contracted for the Central hub
- Specification developed for Multidisciplinary Team
- Establishment of both board now that the Governance arrangements are agreed
- Engage with Square Bay and Persimmons on executing the contract and the commencement of their infrastructure obligations



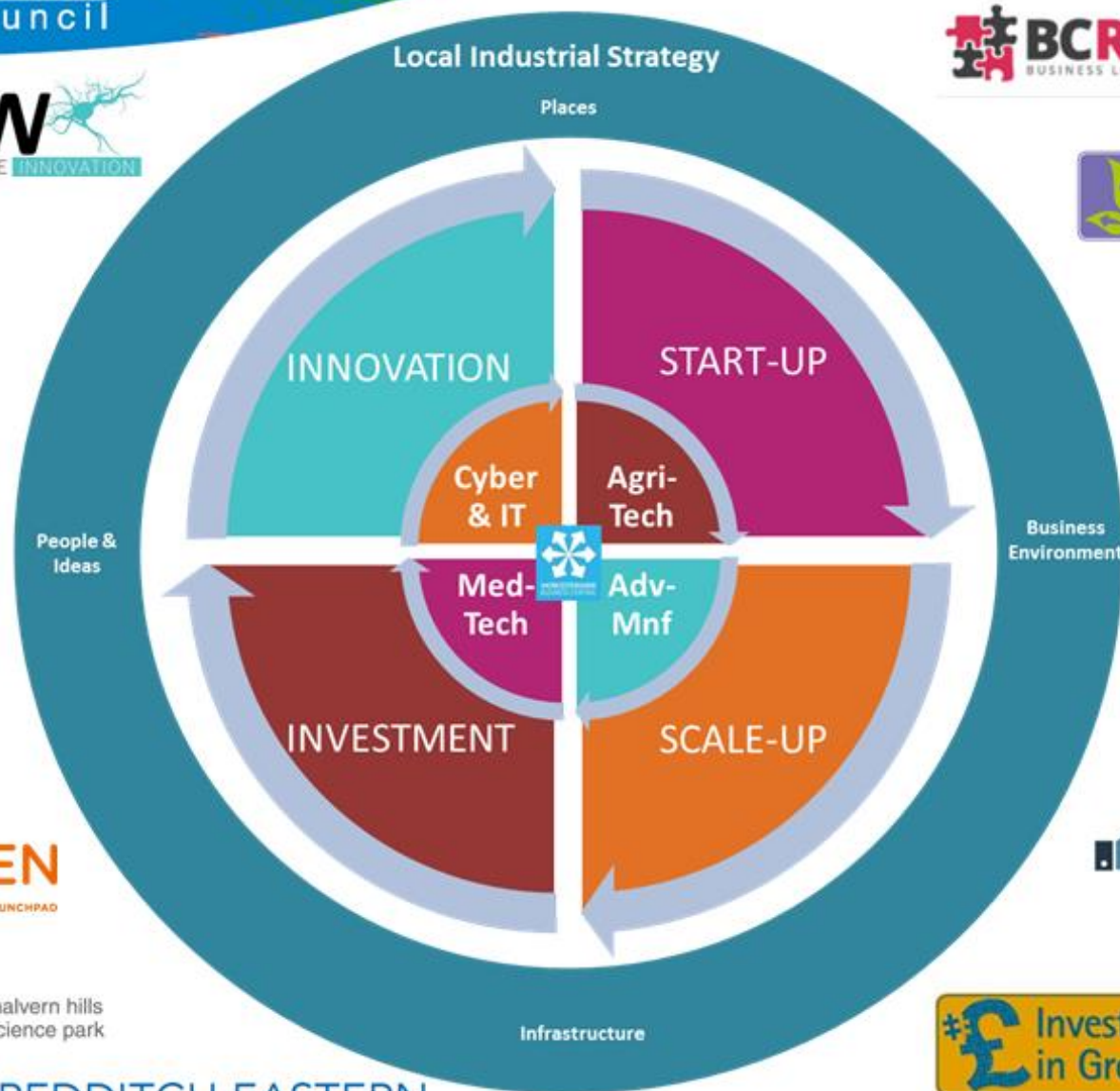
Open for business...



Page 6



REDDITCH EASTERN
GATEWAY



Open for business...



✓ 90+ Business Assists

✓ 70+ Cyber Security Grants & Cyber Sector Growth Grants Awarded

✓ 20+ jobs

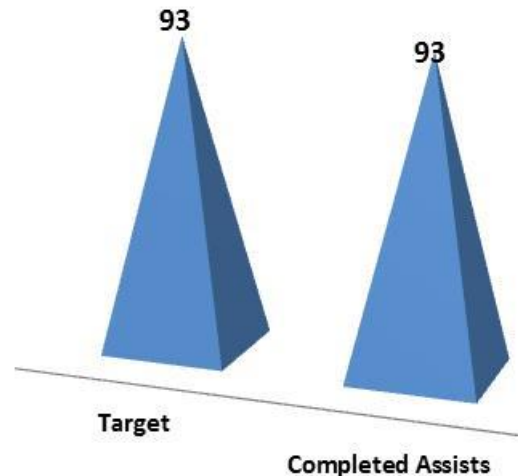
Case Study

Scimitar Sports

Scimitar Sports received invaluable support from Be Cyber Secure and Worcestershire Business Accelerator for new CRM system, web security and GDPR.



Be Cyber Secure - Business Assists



Data and Systems Security Business Support Programme

35 businesses assisted

12 hours practical specialist data and security implementation support



European Union
European Regional
Development Fund

Open for business...

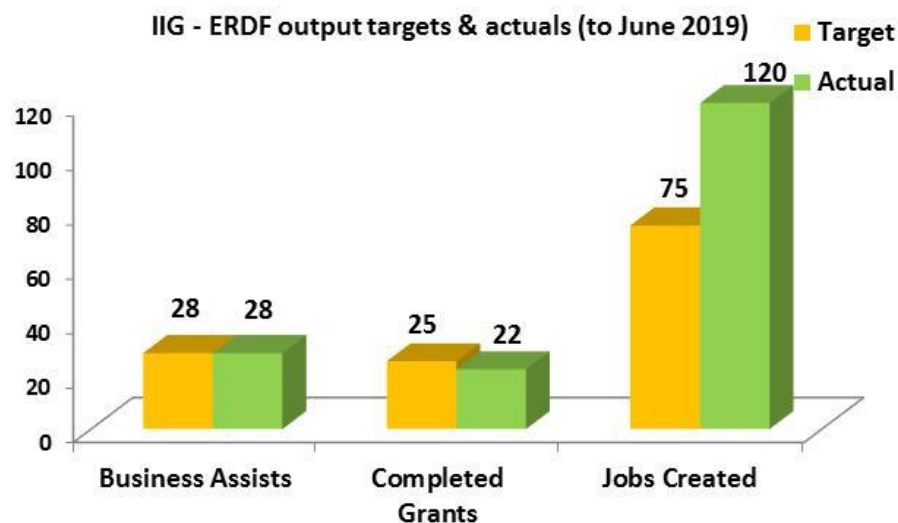


✓ Investment Readiness Support –

28 business assists

27 grants

Page 8



Case Study

Rocket Caravans

Worcestershire manufacturers Rocket Caravans Ltd thanks Investing In Growth for improving efficiency - support provided for move to new premises

<http://www.business-central.co.uk/rocket-caravans-case-study/>



European Union
European Regional
Development Fund

Open for business...



LEADER

- ❖ Total Programme Budget - £1,922,389
- ❖ Projects Contracted - £1,609,711 (79)
- ❖ Spend so far (Contracted) - £1,186,751
- ❖ Remaining funding to spend (Contracted) - £422,960
- ❖ Projects completed - 52
- ❖ Jobs created so far - 35 (target 60)

Page 9



Department
for Environment
Food & Rural Affairs



The European Agricultural Fund
for Rural Development: Europe
investing in rural areas

Case Studies

Spot Loggins

£11,660 grant - purchase of a new ice cream machine, an aging VAT to store the mix before production and a large storage container freezer. The project will allow it to increase production four fold and take on two new workers.



Astley Vineyard

£50,000 awarded to one of the oldest vineyards in the UK for the construction and equipping of a visitor centre and winery. The team at Astley Vineyard has seen an immediate and sizeable increase in visitor numbers, and are on track for more than 1,200 visitors in their first full year of operation.



Open for business...



Support for starting your business in Worcestershire

**Pre Start/Start-Up
workshops & 1-2-1
support**
Blue Orchid

Page 10

**High Growth Start-Up
1-2-1 support**
Baldwins Holdings Limited

**Summer Startup Boot
camp**
University of Worcester

**Post Start/Early
Stage Business
Support**

Series of
workshops &
1-2-1 support

B-2-B Enterprises
0-5 years trading

Blue Orchid

 **Enterprising
Worcestershire**

**Enterprising
Worcestershire
Start-Up & Early
Stage Business
Grant**

£1,000 - £2,500
50% Funding
B-2-B

Enterprises 0-36
months trading

Worcestershire County
Council



European Union
European Regional
Development Fund

Open for business...



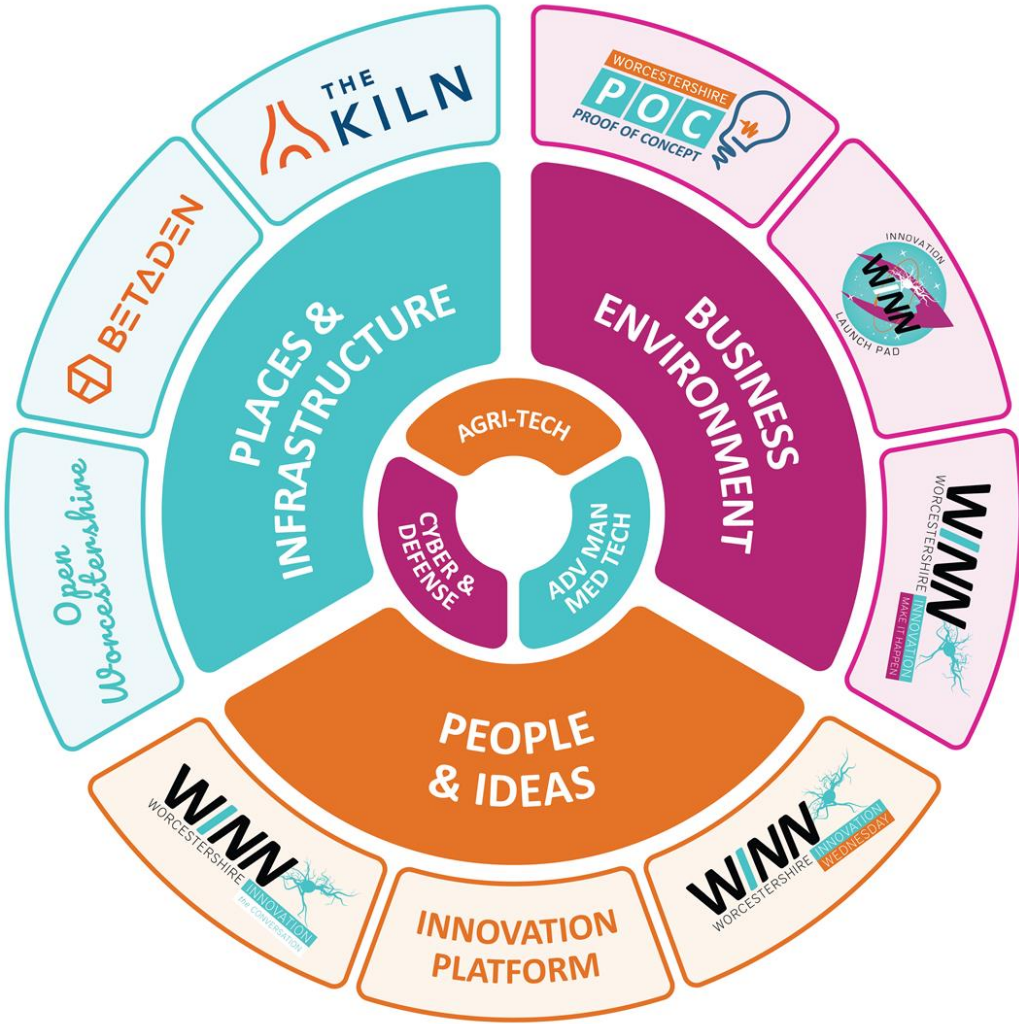
- ✓ **£1m ERDF**
 - ✓ **700+ individuals supported to be enterprise ready**
 - ✓ **200 business assists - workshops & 121 support**
 - ✓ **200 grants**
 - ✓ **350 jobs**
-
- **Enterprising Worcestershire Awards - 18th Sep**
 - **Enterprise Nation - new partnership**
 - **Collaboration with University of Worcester**



Case Studies

<http://www.business-central.co.uk/8d-closures-case-study/>

<http://www.business-central.co.uk/herlig-marles-video-case-study/>



PROOF OF CONCEPT- KEY OBJECTIVE

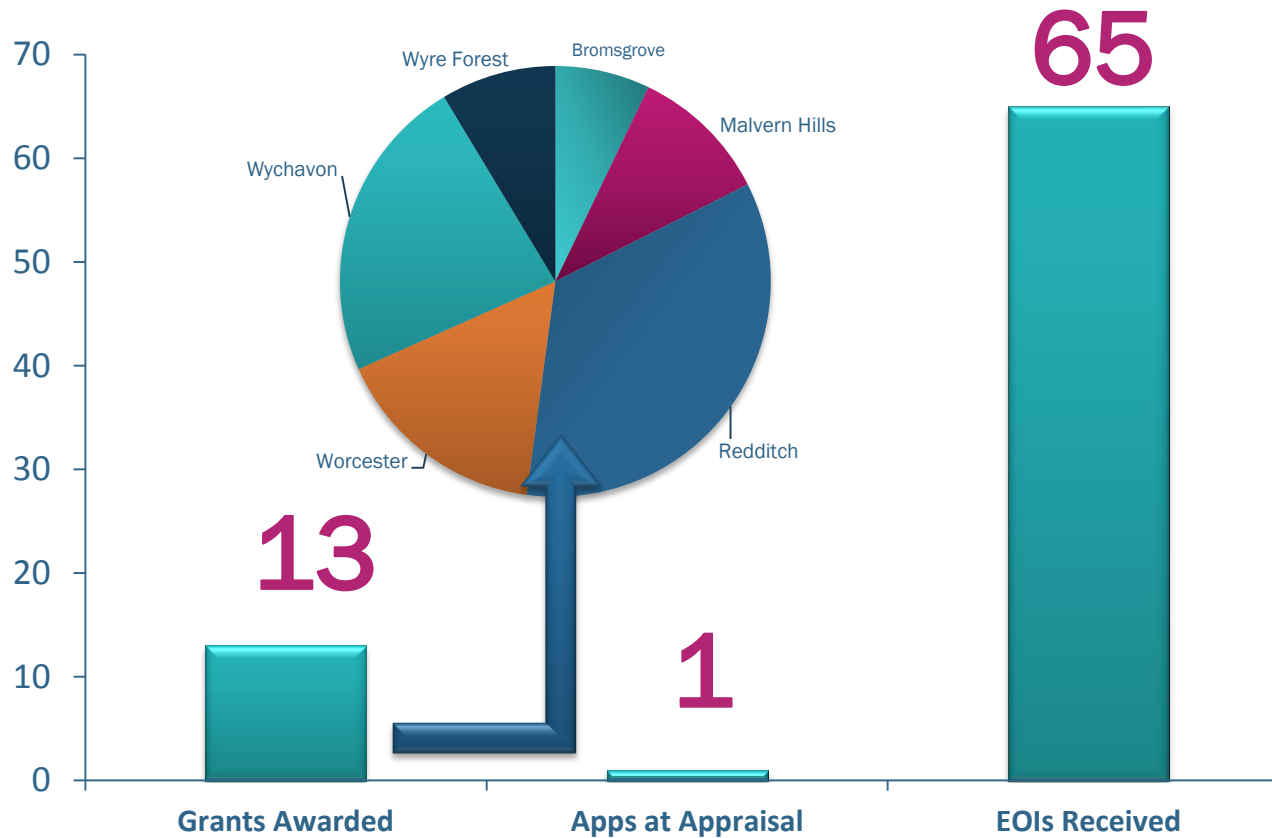
Worcestershire 'Proof of Concept' (POC) is a grant fund which has been designed to support established and start-up businesses to develop innovative new products and processes within Worcestershire. Financial support is awarded to projects that aim to investigate, advance and protect early stage innovative business ideas and to commercialise new innovations. The principal objective of the Proof of Concept scheme is to encourage SMEs to **create products and services, which are new to the company or new to the market.**

PROOF OF CONCEPT - THE HEADLINES

- ERDF grant funding of *up to* £30k (for projects ≥£75k)
- Representing 40% of the total project costs (60% match funded by business)
- For projects aiming to develop, protect, and commercialise new innovations
- For Worcestershire businesses trading >70% business to business
- Focusing on key sectors:
advanced manufacturing, agri-tech, cyber & defence, med-tech
- Referrals via Jane Holmes at Central Technology Belt

Standard POC Grants

Page 15



Business Environment



Case Studies <https://youtu.be/M1bwPyDNFAQ>

Page 16

Business Environment

Page 17



INNOVATION WNN LAUNCH PAD

For future thinking businesses

1-2-1 bespoke business support

Delivered by top innovators

Meet like minded entrepreneurs

Proof of Concept funding

INFO: explore our website:
winn-hub.com/innovationlaunchpad

APPLY: via our free mobile app,
search and download: WNN

Get it first on Google play App Store

European Union
European Regional
Development Fund

Business Environment



WINNING PRIZE WORTH 15K

Winner will be announced at our WINN Wednesday 'Show Me The Money' event. The total prize is worth £15,000! And includes £5,000 cash and bespoke packages from each of our sponsors with a value of £1,000 each.



MEET WITH SPONSORS

The WINNER will meet with each of the sponsors to develop the best possible package to support the launch of their idea and kick start the exciting journey!



SHOWCASED AT EVENT



our sponsors



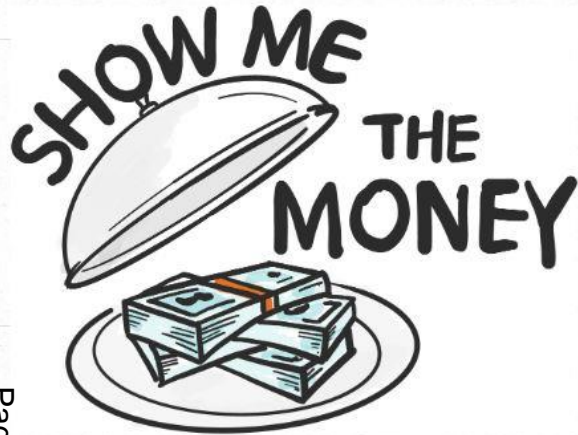
our partners



media partners



People & Ideas



Page 19

Wednesday 11th September 2019
5pm - 8:30pm



Robert Burns
Chartered Financial Planner



Jamie McLellan
Tax Projects Manager at Haines Watts



Steve Harris
Director at Central Finance



Hannah Ross
Proof of Concept Project Manager



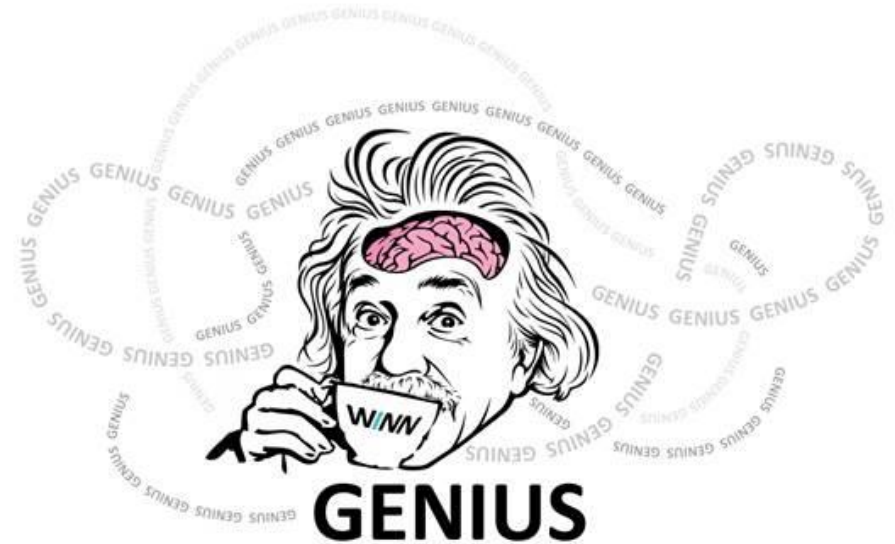
Dr Adrian Burden
Founder | Malvern Festival of Innovation



Malvern Festival
of Innovation



People & Ideas



16th October – 5.30pm Coomber

4th December - 10.30 am DRPG

Wednesday 27th November 2019
5pm – 8.30 pm

People & Ideas







Open for
Business



Get Involved

With the Worcestershire 1000

A network of county champions made up of businesses, organisations and individuals that will help to tell the Worcestershire story and promote the county regionally, nationally and internationally.



https://www.youtube.com/watch?v=WOZybEAa2_o



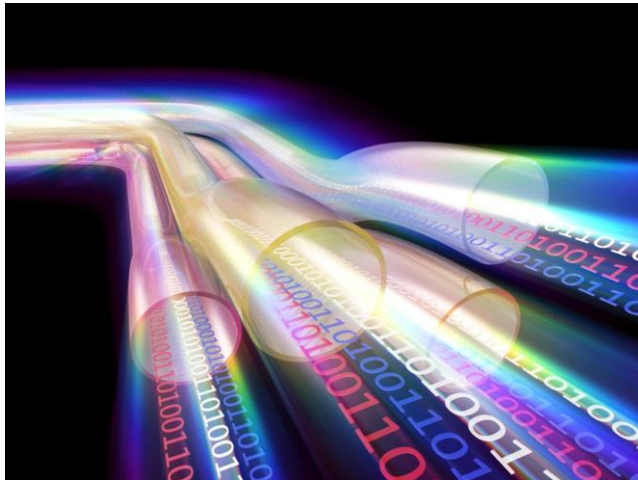
worcestershire
countycouncil

This page is intentionally left blank

Overview & Scrutiny Infrastructure Delivery in Worcestershire

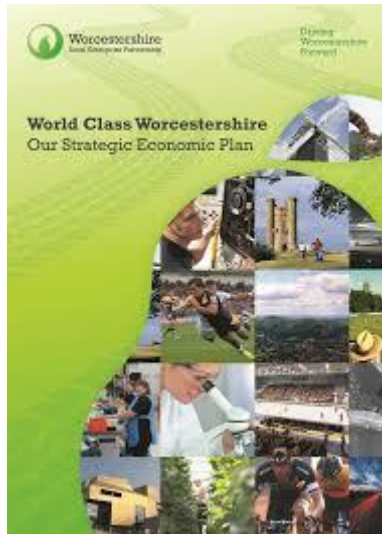
Emily Barker

Why do we deliver infrastructure?



Strategic and planning documents

Page 27



Wyre Forest District Council
Infrastructure Delivery Plan



Pre Submission Version
June 2019



Page
Wyre Forest Infrastructure Delivery Plan October 2019



World Class Worcestershire



Our ten year plan for jobs, growth and the economy



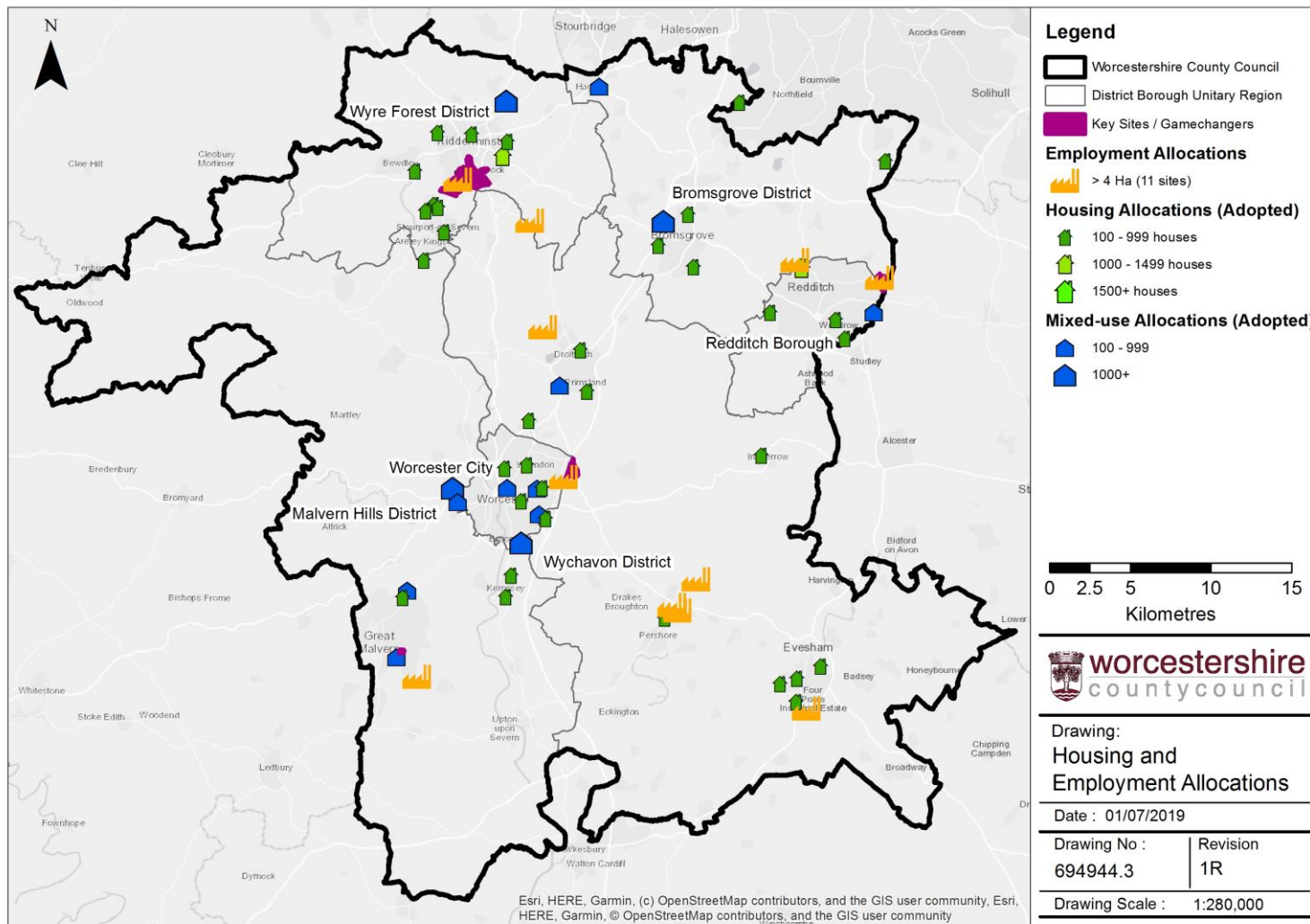
Energy Strategy

Worcestershire LEP Energy Strategy

Prepared by: Enersoft Ltd
an agri-tech group company

Development Across Worcestershire

Page 28



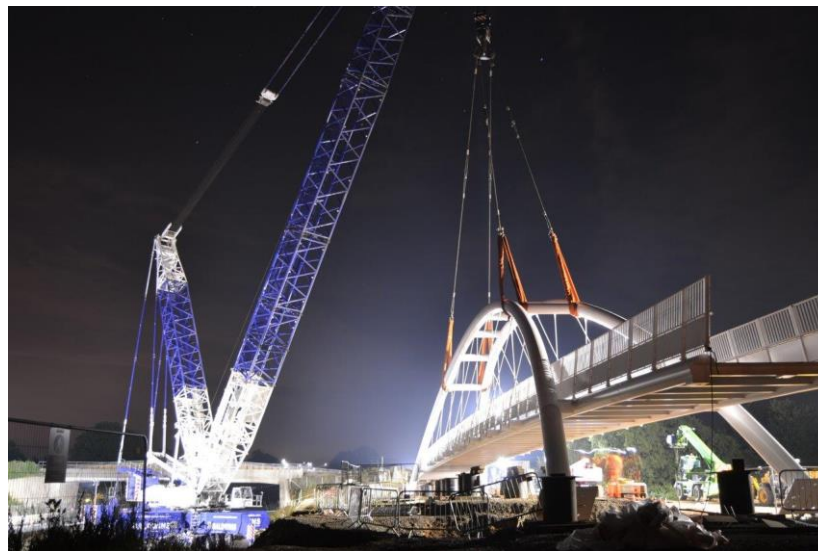
Mitigating Development Impact

South Worcestershire Developer Contributions Supplementary Planning Document



Transport & Highways
Education
Utilities
Community facilities
Emergency Services
Flood Risk & Drainage
Healthcare
Communications
Open Space, Sport & Recreation
Waste

Transport



Education



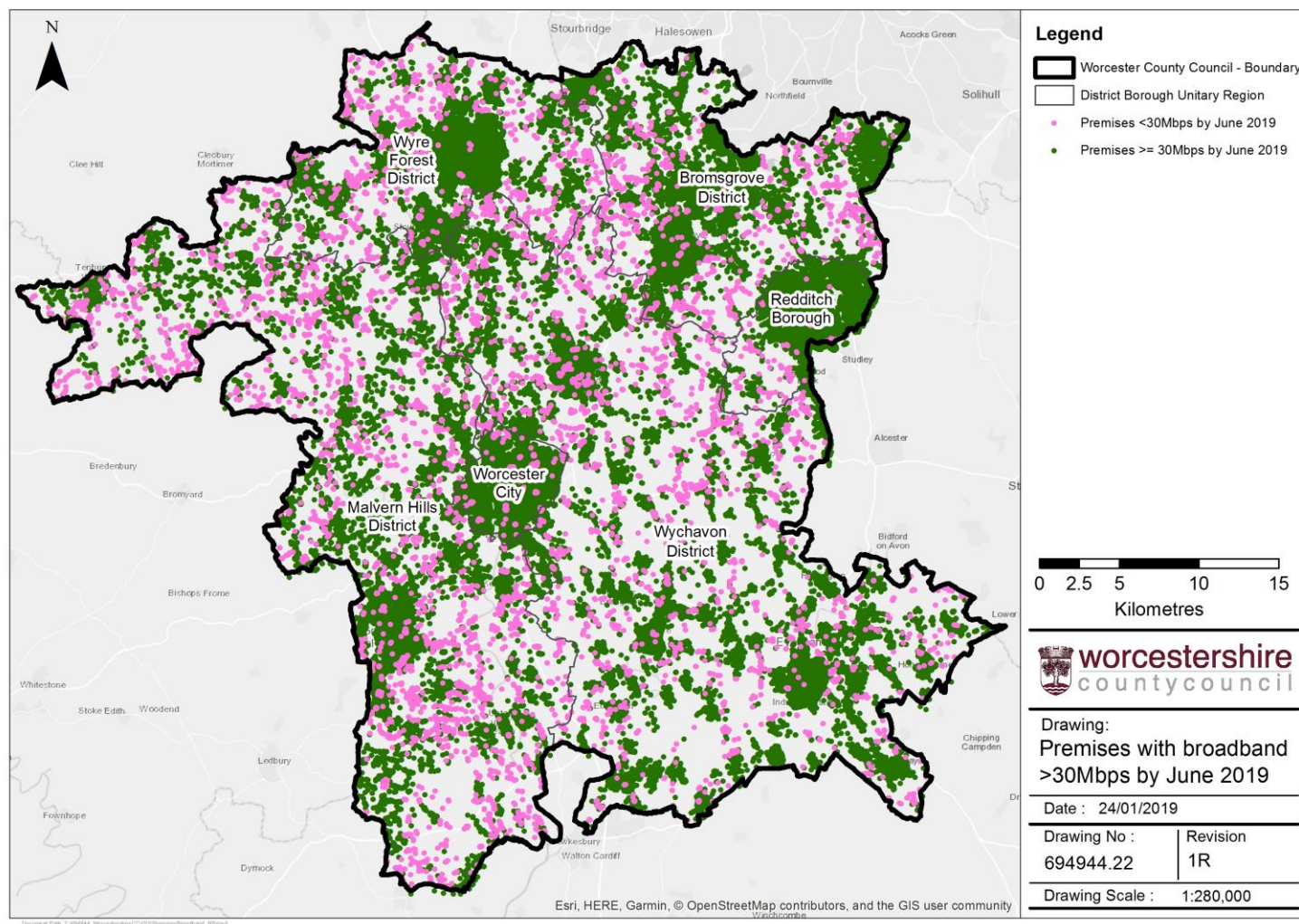
Waste

- Sufficient residual waste capacity for up to 60,000 new homes up to 2040



- 17 Household recycling centres across the county

Broadband & Growth



Funding

Infrastructure Funding



Page 34

Build Costs



Viability

Appraisal and Viability – Definition and Meaning (Adapted from RICS draft guidance 2012)

	Viable	Not Viable
Value of Development (£ GDV)	Developer's Profit (Return) CIL + S106 Development Costs Land Value	Developer's Profit (Return) CIL + S106 Development Costs Land Value



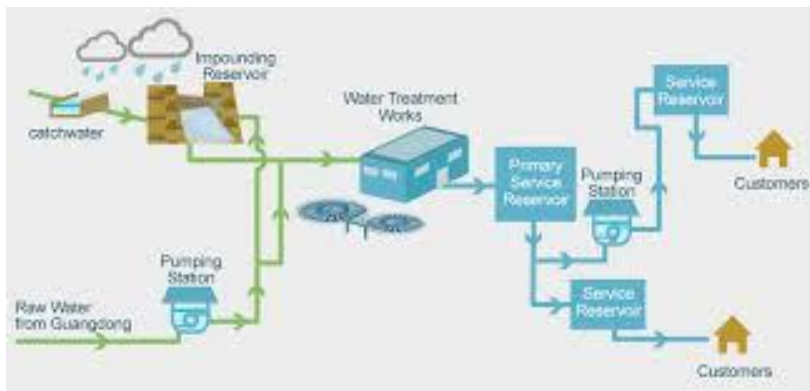
Ministry of Housing,
Communities &
Local Government

The Incidence, Value and Delivery of Planning Obligations
and Community Infrastructure Levy in England in 2016-17



Influencing Wider Infrastructure: Water

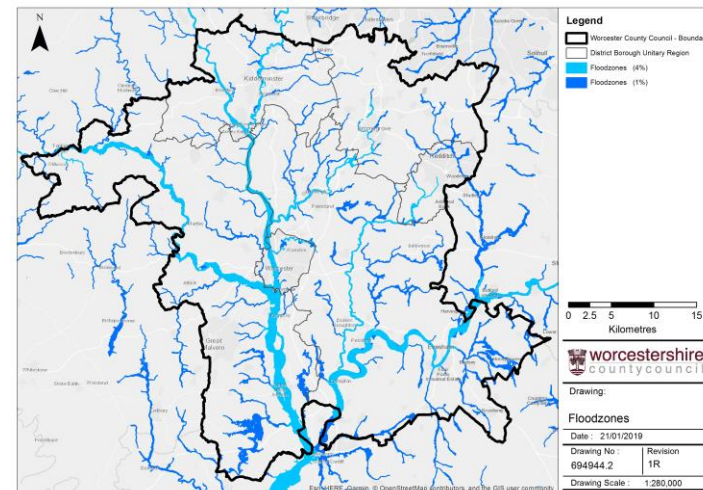
Water Supply



Page 35

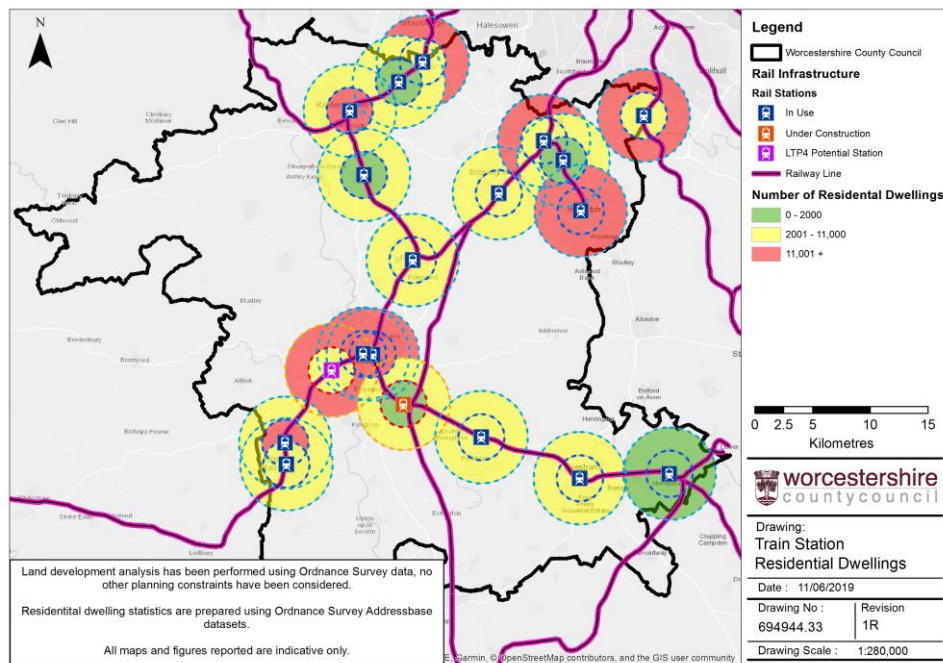
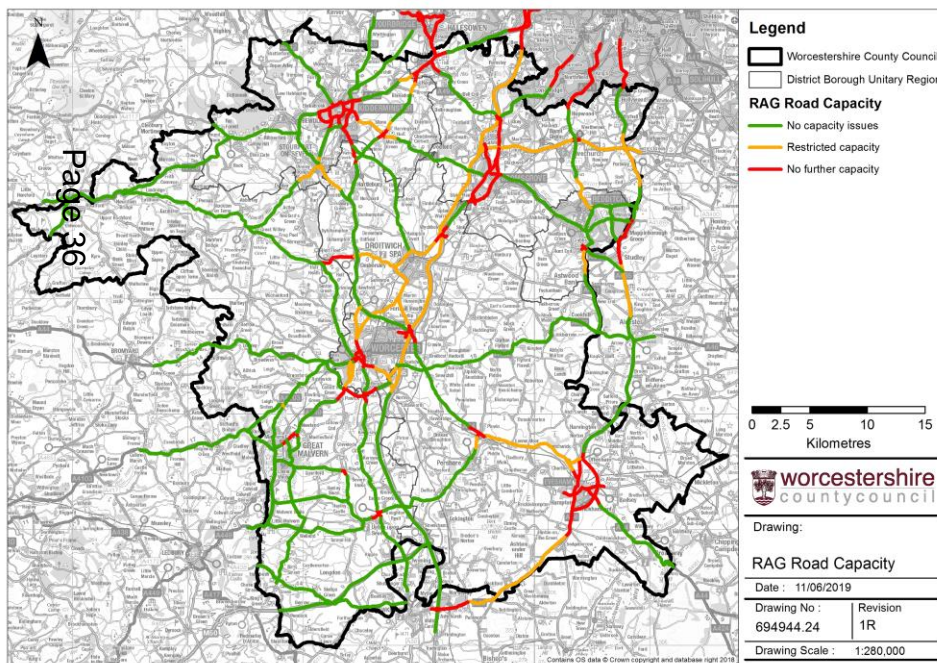


Flooding



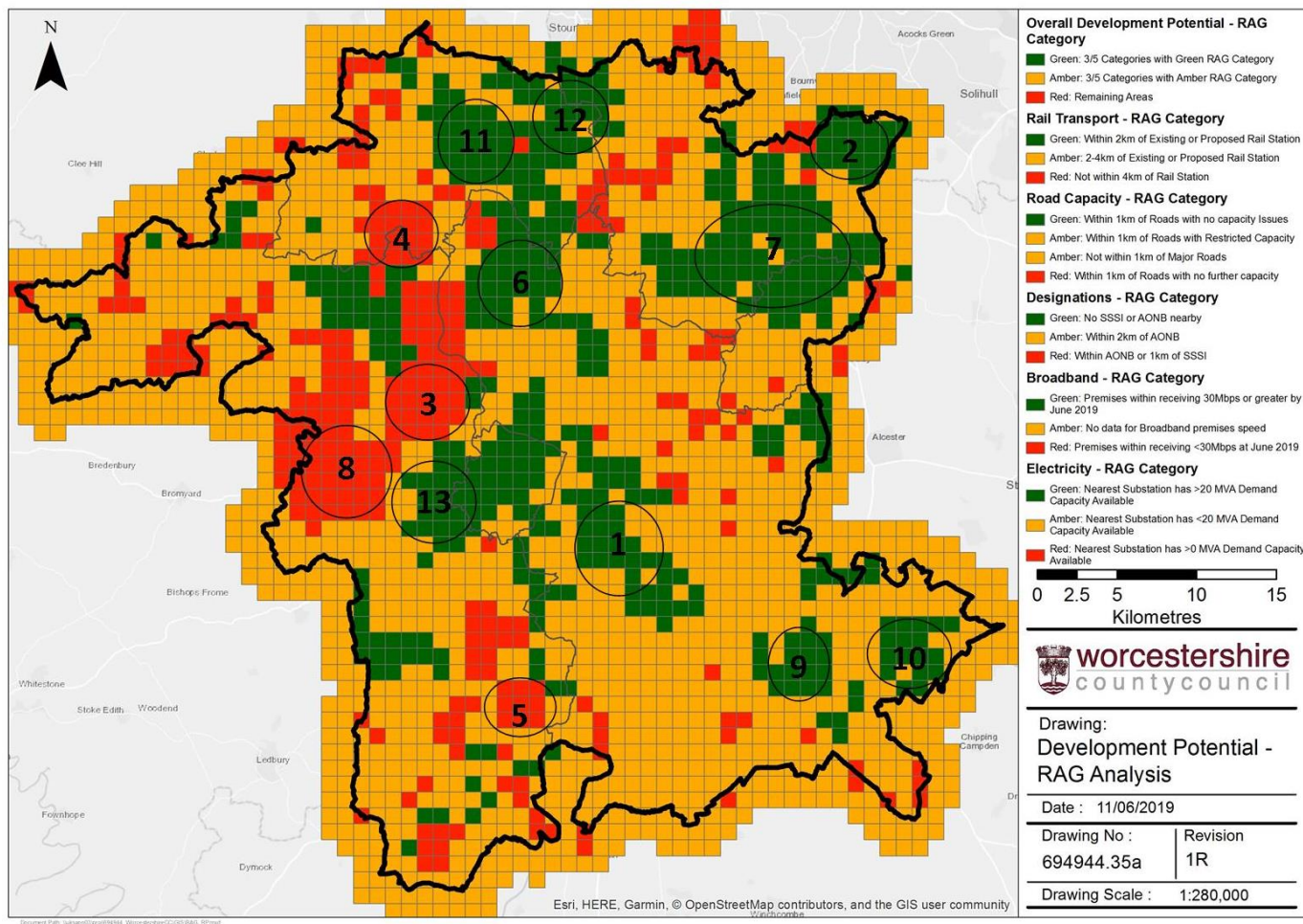
Worcestershire Assessment of Infrastructure

- Considers how infrastructure can play a more proactive role in the development of Worcestershire



Areas of Opportunity

Page 37



SWOT Analysis Wythall Infrastructure Zone of Opportunity (Green RAG Rated)

Page 38

<p>Strengths</p> <ul style="list-style-type: none"> Existing properties within the area are already capable of receiving broadband speeds of 30mbps. Some broadband infrastructure in place. Has sufficient electricity capacity for a development of 10,000 dwellings or more. Located near existing Wythall train station Local services to Birmingham and Stratford; trains have capacity Good access to strategic road network (M42 Junction 3). A435 has capacity in immediate vicinity of the development. Outside of flood zones 2 and 3 Bulk waste facilities at EnviroSort and EnviroCover have capacity for Local Authority collected waste from this development. 	<p>Weaknesses</p> <ul style="list-style-type: none"> A435 to the north of the zone is at capacity. Poor pedestrian access to the station needs significant investment in active travel corridors. Poor train station facilities. Poor cycling access to the station. Car parking at station limited Existing schools full, demand pressures from Solihull MBC
<p>Opportunities</p> <ul style="list-style-type: none"> Located near Birmingham conurbation well suited to take advantage of HS2. To create a self-sufficient new community based around transport links. To create a GI framework around existing SSSI using other existing features such as hedges, canals and field margins Explore alternative school set ups such as "all through", post 16 on site opportunities with links to business and options for site community use. Potential to enhance rail opportunities with significant available car parking to promote a transport hub. Chance to create good quality active travel corridors 	<p>Threats</p> <ul style="list-style-type: none"> Investment in station and active travel corridors